

DLB-GC12-12V : 12V, 200Ah Lithium Blue Battery From Discover



Price: CAD \$2,499.00

SKU: DLB-GC12-12V

Product Categories: [Batteries](#), [Lithium : 1kWh-10kWh, 12/24/48V](#), [Supply](#)

Product Tags: [12v](#), [12v lithium](#), [agm replacement](#), [agm upgrade](#), [bluetooth](#), [canada](#), [discover battery canada](#), [discover DLB-GC12-12V](#), [DLB-GC12-12V](#), [DLB-GC12-12V canada](#), [golf cart](#), [lfp](#), [lfp battery](#), [lifepo4](#), [replacement](#)

Product Page:

<https://www.modernoutpost.com/product/dlb-gc12-12v-12v-200ah-lithium-blue-battery-from-discover/>

Product Summary

Introducing the DLB-GC12-12V Lithium Blue Battery From Discover. When you want to upgrade your AGM battery bank to lithium in your van, RV, or cabin, this should be on the top of your shopping list. This battery is a 200Ah, 12.8V drop-in replacement for standard GC12 DIN: Tall H7 AGM batteries (Golf Cart footprint, but

taller), which makes it easy to effectively double your battery bank capacity with as much as 10x the cycle life, all in the same space at about half the weight.

Product Description

Introducing the DLB-GC12-12V Lithium Blue Battery From Discover. When you want to upgrade your AGM battery bank to lithium in your van, RV, or cabin, this should be on the top of your shopping list. This battery is a 200Ah, 12.8V drop-in replacement for standard GC12 DIN: Tall H7 AGM batteries (Golf Cart footprint, but taller), which makes it easy to effectively double your battery bank capacity with as much as 10x the cycle life, all in the same space at about half the weight.

Discover® LITHIUM BLUE LiFePO4 Premium Series batteries offer BMS controlled safety, long life, lightning fast charging performance and real-time Bluetooth access to battery State of Charge, voltage, current, temperature status. LITHIUM BLUE batteries reflect Discover's Design for Excellence philosophy, incorporating suitcase style carrying handles, terminal protection and field serviceable fuses. LITHIUM BLUE batteries are safe, easily to install and parallel for more capacity.

DLB-GC12-12V Special Features

BLUETOOTH APP

State of Charge

Voltage / Current

Temperature °F/°C

HIGH-CURRENT BMS

Field replaceable fuse protection

DLB-GC12-12V Benefits

ENHANCED RUNTIME

Double the high-current runtime of lead-acid battery

Up to 100% usable capacity

Up to 100% Depth of Discharge

EXTENDED SERVICE LIFE

10x the life of lead-acid battery (BCI-06)

Unlimited Partial State of Charge cycles

Energy throughput warranty

FAST CHARGING

Up to 5x faster than new lead-acid batteries

Up to 10x faster than aged lead-acid batteries

2x faster than C/2 rated lithium batteries

Opportunity charge at 1C rate anytime, regardless of SoC

SURGE POWER

Surge power for inverter chargers

Up to 3C peak power discharge rate

Up to 1C continuous discharge rate

HIGH-EFFICIENCY

Up to 50% more energy efficient than a lead-acid battery

Up to 98% round-trip efficiency

PARALLEL POWER

Easy to parallel more capacity

Linear scaling of charge, discharge and peak capacity

QUICK INSTALL

Fast installation. No special tools

Drop-in lead-acid replacement

RELIABLE AND SAFE

LiFePO4 is safe

Maintenance-free

UL94 V0 flame retardant case and cover

IP 67 rated

CERTIFIED QUALITY

Discover® manufacturing facilities are fully certified to ISO 9001/14001 and OSHA 18001 standards.

CERTIFICATION STANDARDS

CE

UN 38.3



SHIPPING CLASSIFICATION

UN 3480, Class 9 (Lithium batteries)

DLB-GC12-12V Specifications

Industry Reference BCI: GC12 DIN: Tall H7

Length A (in/mm) : 12.2 / 312

Width B (in/mm) : 7.0 / 177

Height C (in/mm) : 10.9 / 276

Total Height D (in/mm) : 10.9 / 276

Weight (lbs/kgs) : 44.1 / 20.0

Terminal : ST 5/16

Electrolyte : LiFePO4

Cell(s) : Prismatic 4S2P

Case Material : UL94-VO PBT/PC

IP Rating : 67

Energy Capacity : 2560Wh

Open Circuit Voltage (V) : 12.8

Charge Voltage (Bulk Vdc) : 13.8 - 14.2

Max Absorption Voltage (U1 Vdc) : 13.8

Float Voltage (U2 Vdc) : 13.6

BMS Max. Voltage protection (Vdc) : 14.6 (Approximately)

Suggested Low Voltage Cutoff (Vdc) * : 12

BMS Min. Voltage protection (Vdc) : 10.0 (Approximately)

Max. Continuous Charge Current (I Max. Adc) : 150

Min. Finishing Charge Current (I Min. Adc) : 2%-3% C1 / Min. 200ma

Max Continuous Discharge Current (Adc) : 150

Max. Peak Current (Adc) : 250 A RMS (2 sec)

Self Discharge (25°C / 77°F) : < 3% per month

Charge Temperature Min: 0°C (32°F) | Max: 55°C (131°F)

Discharge Temperature Min: -20°C (-4°F) | Max: 60°C (140°F)

Storage Temperature Min: -10°C (14°F) | Max: 30°C (86°F)

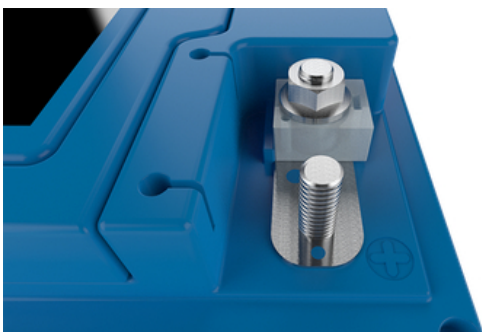
Electrical Specifications at 25°C.CAUTION: Extra considerations must be given to depths of discharge, operating voltages and currents when designing systems for use at maximum operating temperatures.CAUTION: Do not exceed maximum voltage at the battery terminals (Bulk Vdc)*NOTE: 98% of battery capacity is delivered above 3Vpc (12V, 24V, 36V and 48V models)

Download the Spec Sheet from the Discover Battery product page

Product Attributes

- Dimensions: 1 × 1 × 1 cm
- Weight: 20 kg

Product Gallery



Product data have been exported from - Modern Outpost
Export date: Thu Dec 1 0:41:04 2022 / +0000 GMT