

Ground Mount For 8+ Solar Modules by Fast Rack



Price: CAD \$1,390.00 - CAD \$3,390.00

Product Categories: [Ground Mounts](#), [Mounts](#), [Supply](#)

Product Tags: [adjustable](#), [adjustable ground mount](#), [adjustable solar mount](#), [canada](#), [fast rack](#), [ground mount](#), [pv](#), [solar](#), [solar array](#), [solar ground mount](#), [solar ground mount canada](#), [solar panels](#)

Product Page:

<https://www.modernoutpost.com/product/ground-mount-for-8-solar-modules-by-fast-rack/>

Product Variants

- Ground Mount For 8+ Solar Modules by Fast Rack - : Up to 8x 60/72-Cell Solar Modules ()

- Ground Mount For 8+ Solar Modules by Fast Rack - : Up to 16x 60/72-Cell Solar Modules ()

- Ground Mount For 8+ Solar Modules by Fast Rack - : Up to 24x 60/72-Cell Solar Modules ()

Product Summary

The Fast Rack 2-Tier adjustable ground mount is a cost-effective mounting solution for solar arrays of 8 or more modules. This package hosts 2 tiers of 60 or 72 cell modules in portrait. Use these 8-module rail set blocks to build your array of any size. Fits all major modules, and provides tilt ranges from 30 to 60 degrees.

Made in Canada

Product Description

The Fast Rack 2-Tier ground mount is a cost-effective mounting solution for solar arrays of 8 or more modules. This package hosts 2 tiers of 60 or 72 cell modules in portrait. Use these 8-module rail set blocks to build your array of any size. Fits all major modules, and provides tilt ranges from 30 to 60 degrees.

Made in Canada

The new **Fast-Rack 2-Tier** Universal Ground Mounting system is a modular approach to building ground mounted solar arrays from 2 to 200 kilowatts. Optimized installation labour, site work, & structure costs, lower the overall installation costs of building residential, rural and commercial solar systems. FastRack Ground Mounts allow the freedom to mount the solar panels in the optimum location for exposure to direct sunlight, and have the advantage of flexible tilt angles to maximize solar production, and tend to shed snow faster than roof mounts. The clearance above the ground is flexible, allowing them to be used in areas with greater snow depths. They fit both 60 or 72 cell modules. The Fast-Rack 2-Tier Universal Ground Mounting system was designed to speed the installation of large scale PV arrays with a minimum number of ground connections.

With up to 10' spans between legs, they connect to piers, ballast blocks, helical piles or parallel beams or wood or steel.

When you purchase a FAST-RACK 2-Tier Universal Ground Mount for 60 or 72 cell Modules, we supply the mounting structure, with aluminum rails that secure your solar panels and legs to provide the ability to adjust tilt angles. They are designed to mount to an on-site foundation of either helical/screw piles, concrete piers, or concrete ballast blocks. You can often find these material locally. Available foundation drawings have ideas for you, but we recommend you consult local engineers to make sure your foundation satisfies local wind and soil conditions.

Fast-Rack 2 Tier Universal Ground Mount Innovations:

UP TO 10' BETWEEN FEET - Large spans to decrease footings, screw piles and labour.

MODULAR APPROACH - With 8 panel building blocks, you can build systems from 2 to 200kW. Each kit includes splices to connect adjoining rails.

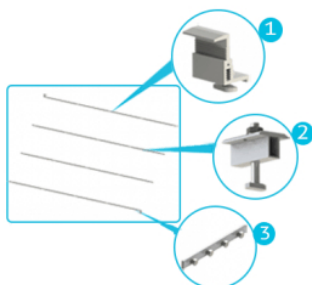
INTEGRATED GROUNDING - Using patented grounding solutions, the rails bond the panel to the system ground, eliminating panel ground lugs and wires.

60 or 72 CELL COMPATIBLE - Fits all module sizes and frame depths. Use 72 cell modules like the HES-320 for maximum power

UNIVERSAL GROUND CONNECTIONS - Ready to connect to beams, piers, screw piles or cement blocks for faster, cleaner installations.

2-Tier Ground Mount Specifications

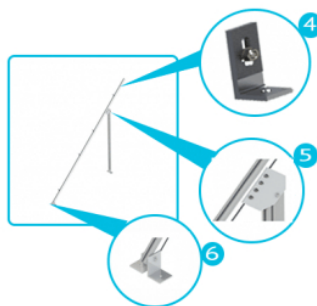
- Integrated Bonding of modules & rails - 120" maximum span between feet -
- Optional tamper-proof hardware - Footing Options : Ground screws, cement blocks, or cement piers



What's Included

- 1- Adjustable Module End Clamps - 2- Mid Clamps with Integrated Grounding -

3- Rail Splice to join adjacent mounts - 4- Only 1 tool needed; 1/2" deep socket
- 5- Pivot Plate to set tilt angle - 6- Universal Mounting Feet for posts/piles/beams/concrete



] [Download the Brochure here](#)]

Watch a sample installation set-up here

Engineering documentation is available upon request.

Product Attributes

- Dimensions: 1 × 1 × 1 cm
- Weight: 1 kg
- Model/Size: FR2TGMX-8 : Up to 8x 60/72-Cell Solar Modules, FR2TGMX-12 : Up to 12x 60/72-Cell Solar Modules, FR2TGMX-16 : Up to 16x 60/72-Cell Solar Modules, FR2TGMX-20 : Up to 20x 60/72-Cell Solar Modules, FR2TGMX-24 : Up to 24x 60/72-Cell Solar Modules

Product Gallery



