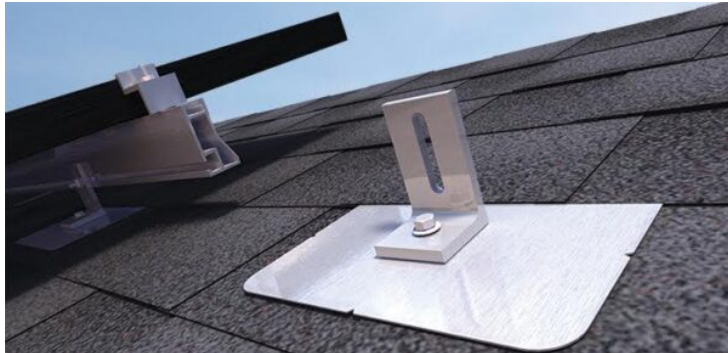


L-Mount Solar Roof Attachments by Quick Mount PV: QMLM



Price: CAD \$19.99 - CAD \$24.99

SKU: QMLMOUNT

Product Categories: [Rooftop Attachments](#), [Composite Shingle](#), [Mounts](#), [Shop](#)

Product Tags: [canada](#), [flashing](#), [l-mount](#), [leak-free](#), [mount](#), [qmlm](#), [qmlm canada](#), [quick](#), [quick mount pv](#), [quickmount](#), [rail attachment](#), [roof attachment](#), [roof mount](#), [solar](#), [solar rail](#)

Product Page:

<https://www.modernoutpost.com/product/l-mount-solar-roof-attachments-by-quick-mount-pv-qmlm/>

Product Variants

- L-Mount Solar Roof Attachments by Quick Mount PV: QMLM - Silver (mill) with Structural Screw ()
- L-Mount Solar Roof Attachments by Quick Mount PV: QMLM - Silver (mill) with Lag Screw ()
- L-Mount Solar Roof Attachments by Quick Mount PV: QMLM - Black Anodized with Structural Screw ()

- L-Mount Solar Roof Attachments by Quick Mount PV: QMLM - Black Anodized with Lag Screw ()

Product Summary

The L-Mount flashed solar roof attachments by Quick Mount PV are the most economical versions of Quick Mount's patented, and ultra-reliable elevated water seal technology. Their 25 year warranty is testament to the L-Mount's quality & waterproofing assurance. Available in standard aluminum mill finish or black to meet your aesthetics needs.

Product Description

The L-Mount flashed solar roof attachments by Quick Mount PV are the most economical versions of Quick Mount's patented, and ultra-reliable elevated water seal technology. Their 25 year warranty is testament to the L-Mount's quality & waterproofing assurance. Available in standard aluminum mill finish or black to meet your aesthetics needs.

Product Code: QMLM

The L-Mount Series are designed for cost-effective, one-bolt installation onto existing composition asphalt shingle roofs. Quick Mount PV engineered its patented **Elevated Water Seal Technology®** into the L-Mount's integrated L-foot and flashing. The result is a super-fast, single-lag bolt installation with unparalleled waterproofing. The L-Mount Series comes with lag bolt attachment for maximum versatility and works with all leading racks. A structural screw option is also available. The L-foot can be rotated 360 degrees for optimal adjustability and positioning of the rail.

The L-Mount features a 9 x 12-inch aluminum flashing. Alignment guides and

rounded corners easily slide under shingles and speed installation on the roof.

L-Mount Features

- Works with QRail and all leading racks - Available with lag bolt or structural screw attachment options - Patented Elevated Water Seal Technology® - L-foot can be rotated 360 degrees for optimal versatility - Fast, simple one bolt installation, no shingle cutting - 9" x 12" aluminum flashing - Meets or exceeds roofing industry best practices; 100% IBC compliant - 18-8 stainless steel hardware (included) - Alignment guides

25-year warranty WARNING: Quick Mount PV products are NOT designed for and should NOT be used to anchor fall protection equipment.

L-Mount Specifications

Each mount kit includes:

- .04" thick, 9" x 12" aluminum flashing - Single-slot L-foot for .438" OD fasteners - Hex-head lag screw, 5/16" x 4" or T-30 hex washer head structural screw, 5/16" X 4-1/2 - EPDM bonded sealing washer, 5/16" x 3/4"

Applicable roof types:

Standard and high-definition composition/asphalt shingle roofs with 5" to 5-5/8" courses

- Compatible with all rail systems

Engineering report & code compliance certification documents are available from the [Quick Mount PV website](#)] **Download the Installation Guide here**

Product Attributes

- Dimensions: 1 × 1 × 1 cm
- Weight: .3 kg
- Finish/Hardware: Silver (mill) with Structural Screw, Silver (mill) with Lag Screw, Black Anodized with Structural Screw, Black Anodized with Lag Screw

Product Gallery

